

# Marine Protected Areas as Sentinel Sites



**Ocean Observing Sites for:**  
Ecosystem Integrity  
and  
Early Warning



# Why MPAs?

- Ecological & economic value
- Representative ecosystems
- Management needs & plans
- Protection & restoration monitoring
- Continuity of investment
- Infrastructure & dedicated staff
- Heavily studied, with baseline data
- Stakeholder need
- Public engagement & partnerships



# Key Messages

- **Sentinel sites** are intensely studied and monitored areas.
- **Sentinel monitoring** informs management by increasing understanding of ecosystems and by providing early warnings of ecosystem change.
- A **sentinel site program** attracts and supports collaboration and advances conservation science



# ONMS and Sentinel Sites

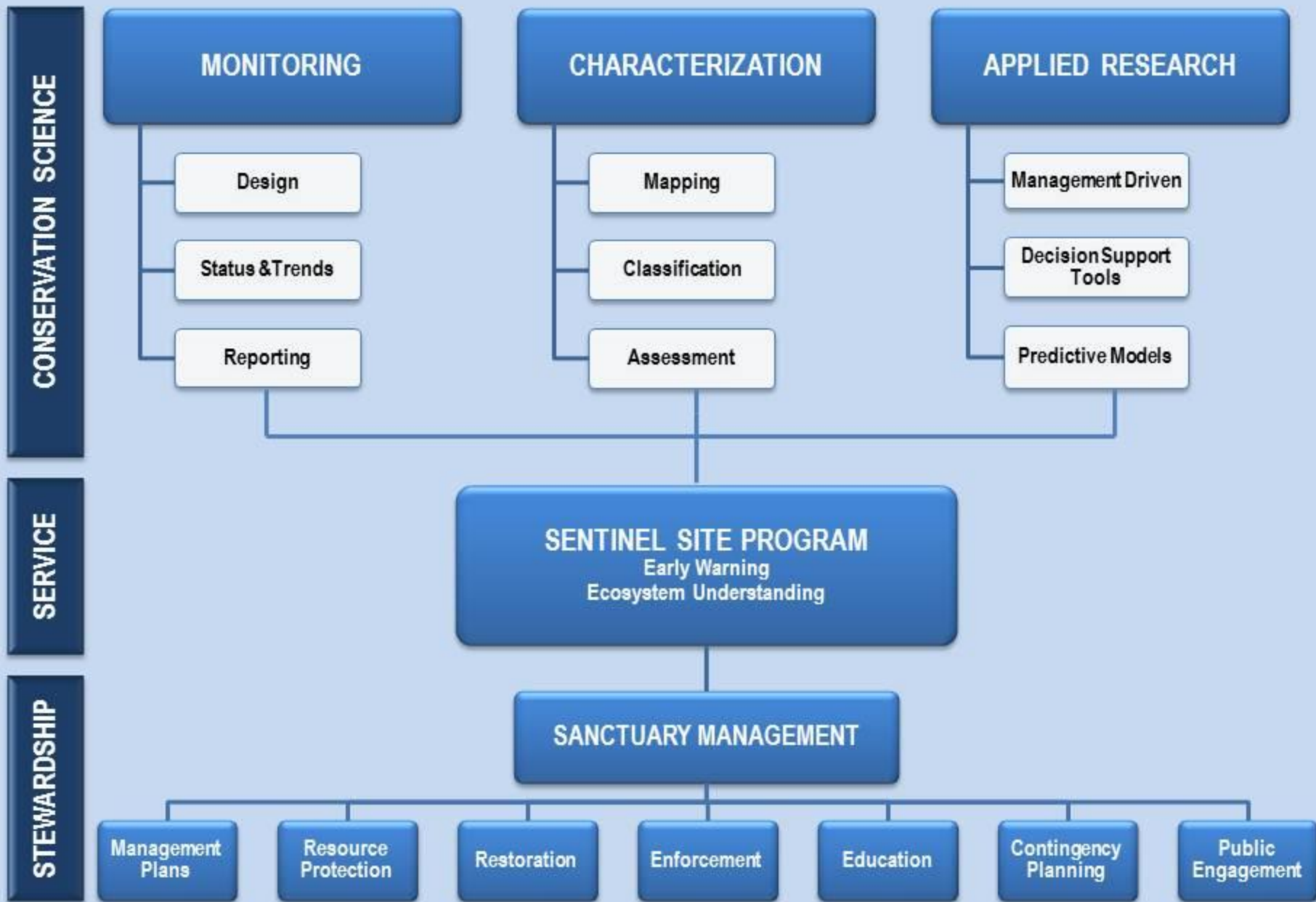
**Improve information access**

**Strengthen and create partnerships**

**Plan for improvements**

**Interpret science to the public**



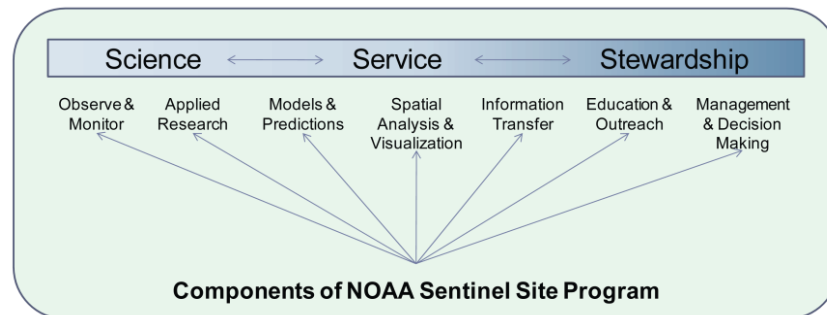


# Drivers of Sentinel Sites

- Do more with less by working together
- Improvements to SWiM SOR
- NOS/Climate SLC initiative
- National Ocean Policy IP milestones
- Next Generation Strategic Plan
- NOAA Five-Year R&D Plan
- Annual Guidance Memoranda

# NOAA Sentinel Site Program

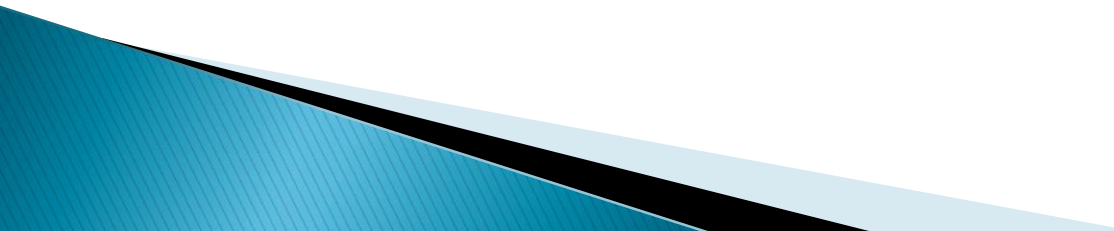
- ▶ Est. Dec. 2011
- ▶ **Place-based, issue-driven approach**  
Current Issue: sea level change & coastal inundation
- ▶ 5 cooperatives



Vision: The NOAA Sentinel Site Program brings to life NOAA's science, service, and stewardship continuum by leveraging existing resources and integrating parallel efforts to promote resilient coastal communities and ecosystems in the face of change.

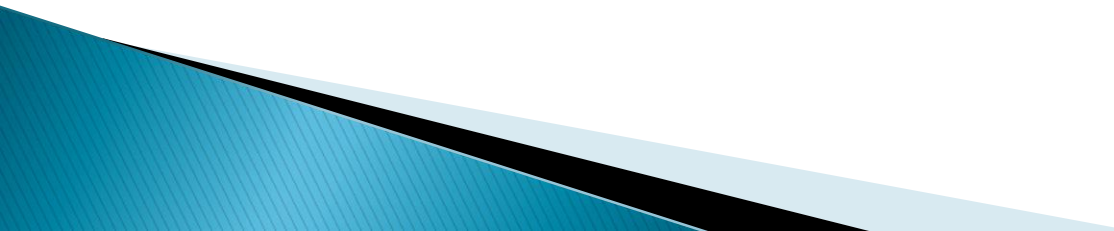


# Who is Involved?

- ▶ DAA appointees from each LO
  - ▶ ONMS & NERRS
  - ▶ NOS (NGS, CO-OPS, CSC, NCCOS)
  - ▶ other Federal partners
  - ▶ academic institutions
  - ▶ NGOs
  - ▶ state & local governments
  - ▶ ...
- 



# Under the NOAA Umbrella

- ▶ Clear, consistent messaging/branding
    - (NOS – NERRS, ONMS, CO-OPS towers, NCCOS spp./habitats)
  - ▶ Shared terminology
  - ▶ Integration of NOAA efforts
  - ▶ ONMS & NERRS as MPA sites
  - ▶ Issue-based growth
- 

# Fully-Functioning Sentinel Program

Science ↔ Service ↔ Stewardship

Observe & Monitor   Applied Research   Models & Predictions   Spatial Analysis & Visualization   Information Transfer   Education & Outreach   Management & Decision Making

**Sentinel Monitoring Program**

```
graph TD; S[Science] <--> Ser[Service]; Ser <--> St[Stewardship]; S --- OM[Observe & Monitor]; S --- AR[Applied Research]; S --- MP[Models & Predictions]; S --- SAV[Spatial Analysis & Visualization]; S --- IT[Information Transfer]; S --- EO[Education & Outreach]; S --- MDM[Management & Decision Making];
```

# Selection Criteria

## *Scientific Rationale & Ecological Significance*

- High likelihood of detecting change
- Key physical and biological attributes representative of the larger ecosystem
- High ecological value (often biological hotspots, or with key species related to ecosystem function)

## *Practicality & Leveraging*

- Documented stakeholder need with interested and engaged management community
- Existing monitoring/observing infrastructure, data availability, and support for continuity
- Existing capabilities for data analysis, synthesis, and translation
- Existing research activities or capacities that support the goals, objectives and priorities

## *Responsiveness to Management Issues*

- Ability of ecosystem to adapt to change and maintain or enhance services provided
- Utility of information to reduce vulnerabilities of ecosystems and communities
- Ability to document changes in local populations and economies
- Utility of lessons learned to other areas with comparable governance and issues

## *Ecosystem Integrity*

- A condition that enables ecosystems to support and maintain a community of organisms that works together and adapts to changing conditions in ways that are determined by the ecosystem's natural evolutionary history

## *Early Warning*

- Indicators of impending change within ecosystems that may allow for effective control or mitigation through management action

## *Sentinel Monitoring*

- Observations that help us understand and track ecosystems and their integrity, and provide early warnings of change. A fully functioning sentinel monitoring program includes a continuum of activities that include observing, applied research, modeling and predictions, data analysis and visualization, information sharing, support for management decisions, and education and outreach

## *Sentinel Stations*

- Discrete measurement locations that provide information that can be used to understand the ecological status and trends in biological and physical variables of interest.

## *Sentinel Sites*

- Areas in coastal and marine environments that have the operational capacity for intensive study and sustained observations to detect and understand changes in the ecosystems they represent

## *Sentinel Network*

- Groups of sentinel stations and sentinel sites whose integrated information and data streams provide a broad understanding of ecosystem conditions at specific temporal and spatial scales that are relevant to science and management priorities

# Sentinel Site

## *Resources & Issues:*

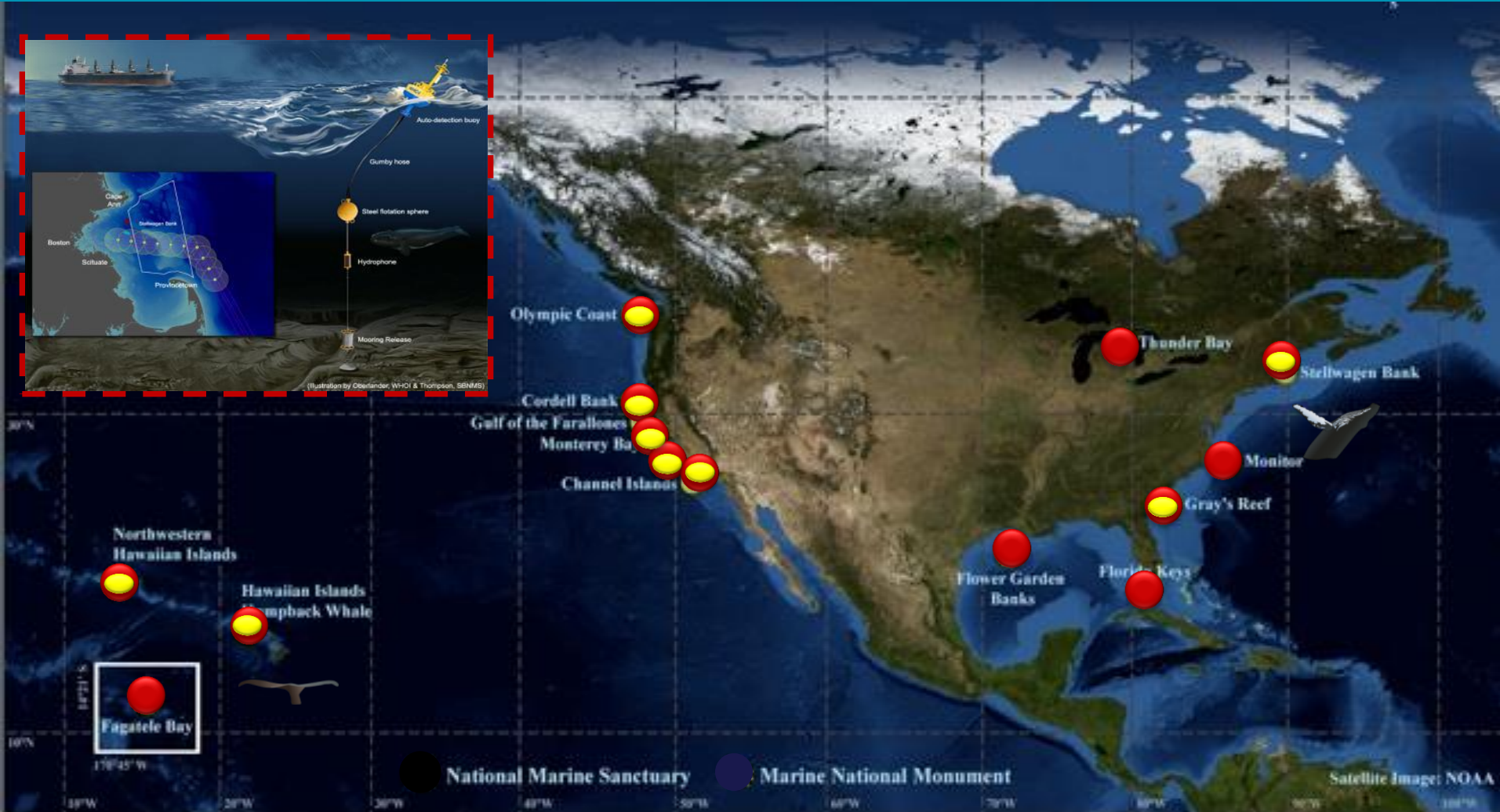
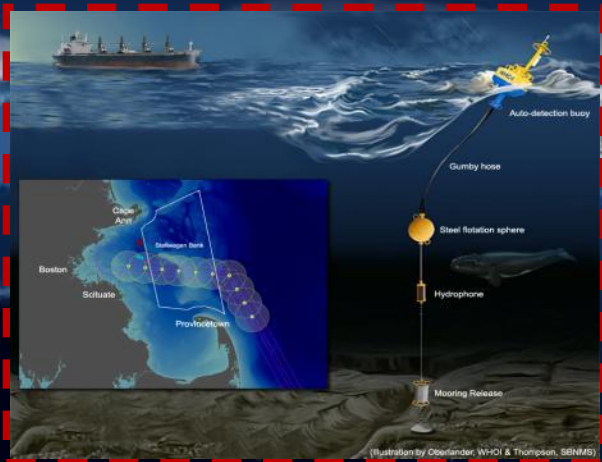
- Benthic diversity
- Food web structure
- Species invasions
- Acidification
- Visitor impacts



# Sentinel Network: Invasive Species -- Lionfish



# National Sentinel Network: Whale Strike

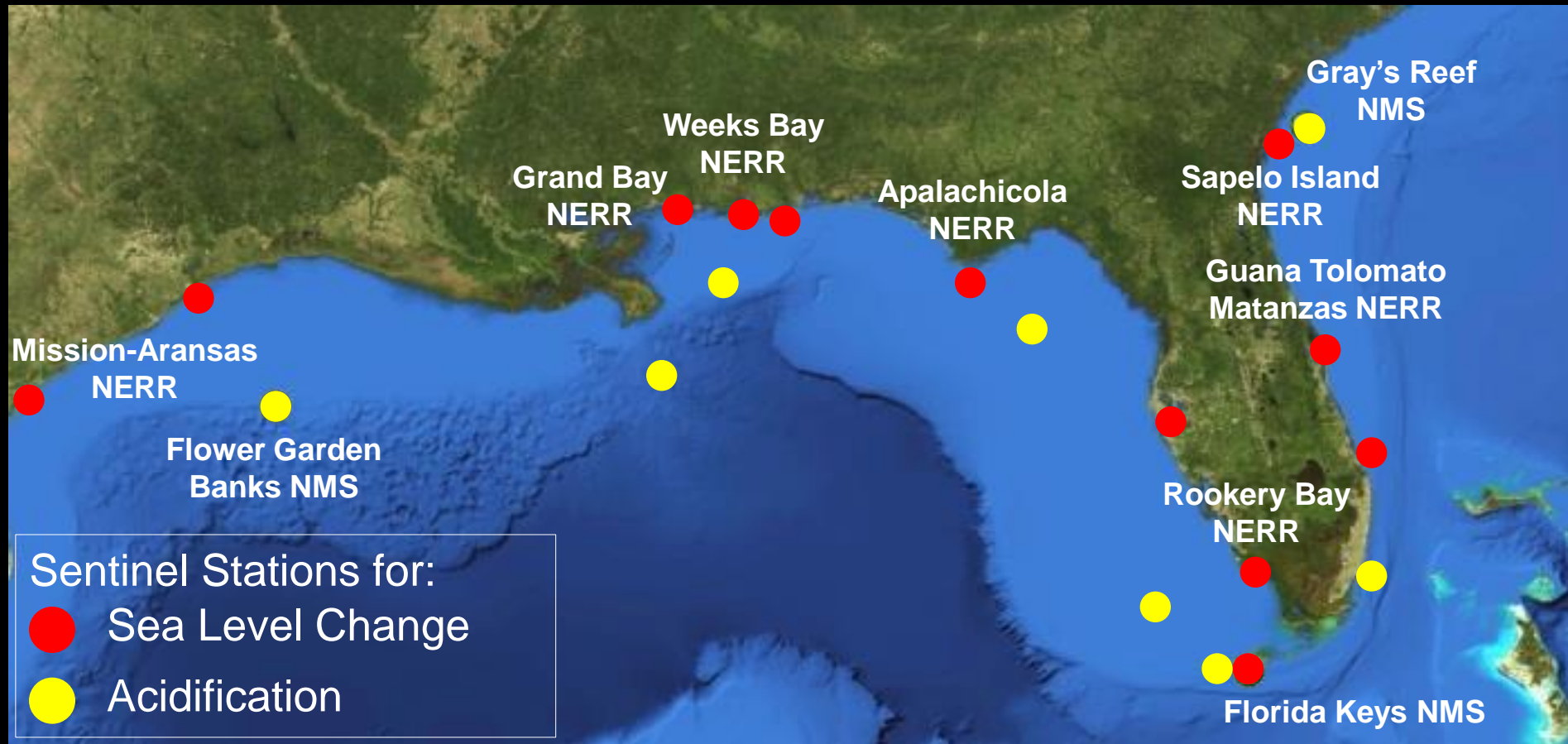


# National ONMS Program: Biodiversity Observing Network





# Sanctuaries and Reserves in Sentinel Networks



# Our Coasts - Our Future

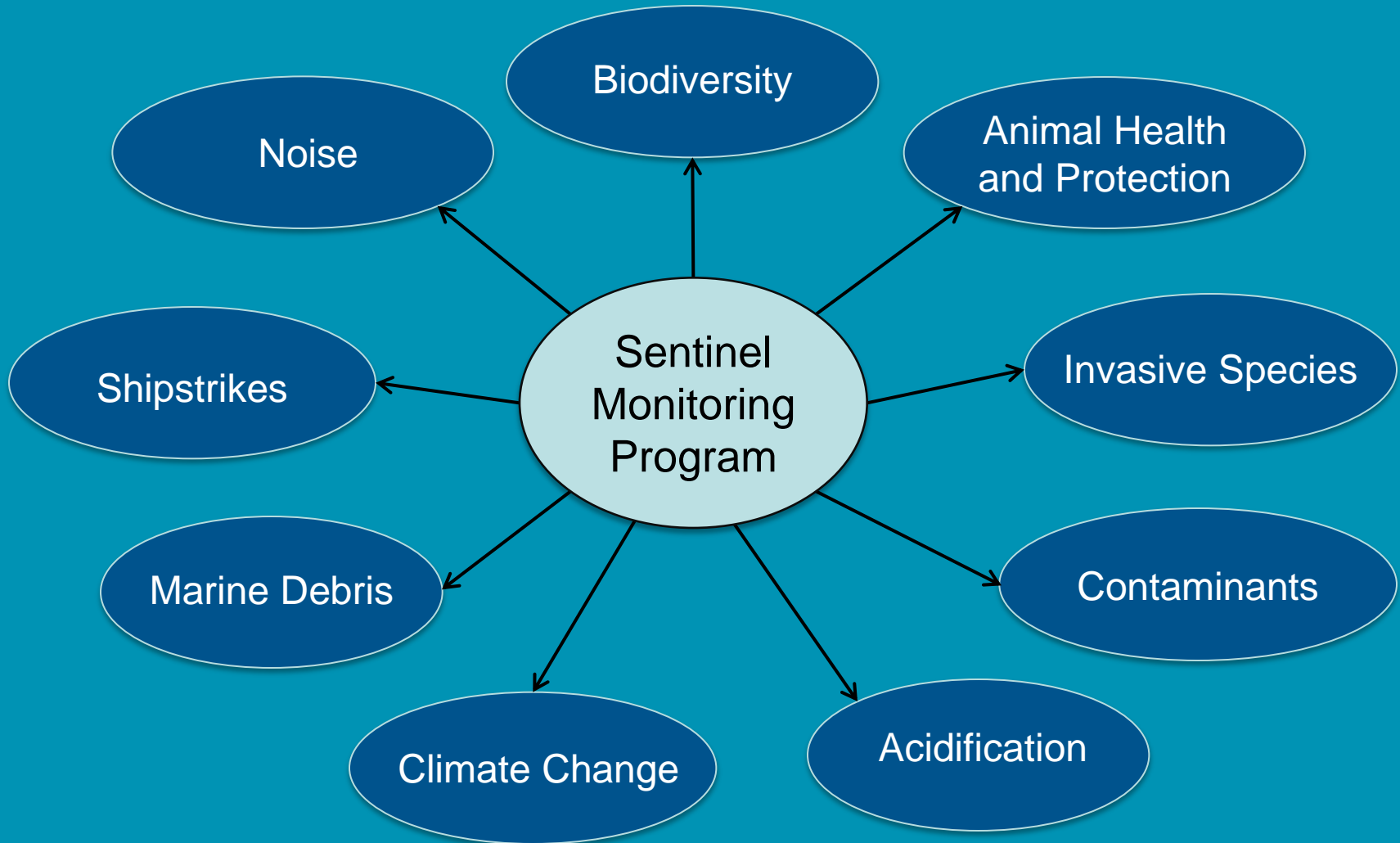


Planning for sea level rise and storm hazards along the Bay Area's outer coast



# ONMS Sentinel Monitoring Program

## *Priority Issues*



# Implementation

## Initial

Web Design/Content  
Marketing to Partners

## Growth

Filling gaps  
Partner investment



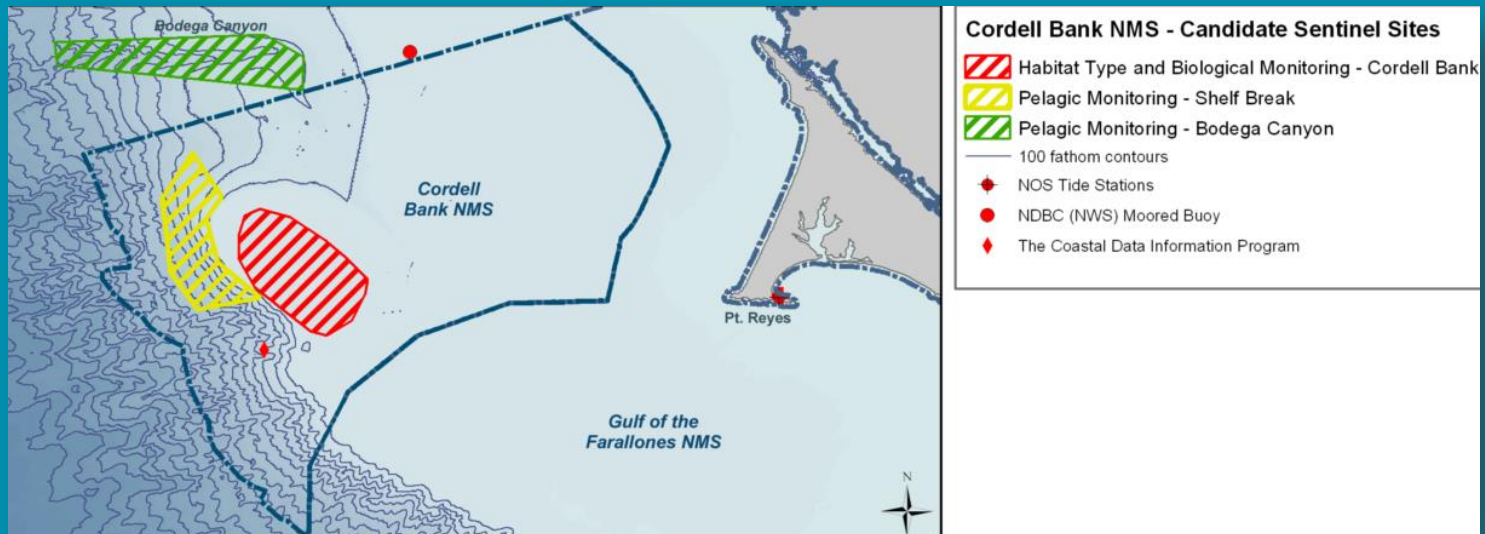
# Sentinel Website

## Initial

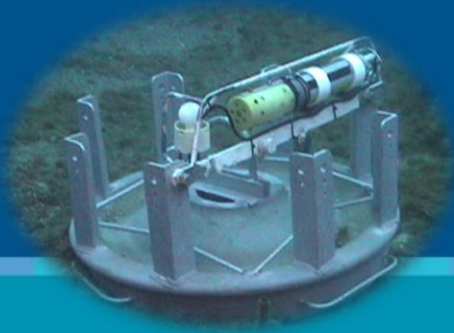
- Monitoring inventory
- Maps of priority observing locations
- Existing capabilities/assets
- Site information & selected results
- Partnering on SLC, OA, Invasives

## Future

- Interactive maps
- Links to data
- Outputs for condition reporting
- Integrating other sentinel programs
- Interactivity for training & education



# Existing Capacity



- SIMoN
- MBNMS Sanctuary Ecologically Significant Areas (SESA)
- West Coast - Beach Watch & LiMPETS
- SBNMS Whale Alert
- FGLTMP
- GRNMS Research Area
- CRCP – NCRMP

NOAA National Marine Sanctuaries: Oceans, Marine Life, Shipwrecks, Diving, Whales, Voyage to Discovery - Mozilla Firefox

File Edit View History Bookmarks Tools Help

http://sanctuaries.noaa.gov/welcome.html

Most Visited NOAA Messenger Exp... NOAA Staff Directory NOAA National Marin... NOAA Central Library NOAA National Marin...

NOAA National Marine Sanctuaries: O...

NATIONAL MARINE SANCTUARIES

Home

About Your Sanctuaries

Visiting Your Sanctuaries

Expeditions

Education

Science

Maritime Heritage

Management

Resource Protection

News & Events

Photos & Videos

Library

Get Involved

RSS Feed

Search

**WELCOME**

Welcome to the National Marine Sanctuaries web site. Here you'll discover the marine life and extraordinary habitats that make up your nation's marine sanctuaries and our continuing efforts to conserve these ocean and coastal treasures.

Click the icon image to the left, then click main image to

Please help protect our ocean by strengthening and expanding our national marine sanctuary system. Text SEA to 20222 on your mobile device to make a \$10 donation to the National Marine Sanctuary Foundation. Please visit [www.NMSFocean.org](http://www.NMSFocean.org) for more information.